

Cartier

Doha Jewellery and Watches Exhibition

2025



DODONE

Ring - white gold, one oval emerald from Ethiopia totalling 10.72 carats, round emeralds and brilliant-cut diamonds.

CRH4384753



DODONE

Necklace - white gold, five oval emeralds from Ethiopia totalling 86.92 carats, round emeralds and brilliant-cut diamonds.

CRH7000841



DODONE

Earrings - white gold, two oval emeralds from Ethiopia totalling 29.19 carats, round emeralds and brilliant-cut diamonds.

CRH8000872



KIGUMI

Necklace - white gold, one 5.22-carat VSI pear-shaped modified brilliant-cut diamonds, ruby beads, chrysoprase, onyx, rose- and brilliant-cut diamonds.

CRH7001075



KIGUMI

Earrings - white gold, pear-shaped modified brilliant-cut diamonds, ruby beads, chrysoprase, onyx, rose- and brilliant-cut diamonds.

CRH8001072



POIRE

Necklace - platinum, one 11.99-carat cushion-shaped sapphire from Madagascar, one 0.50-carat E IF pear-shaped diamond, brilliant-cut diamonds.

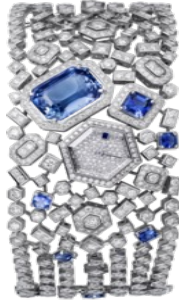
CRH7000949



DOUBLE PIERRE

Earrings - platinum, two cushion-shaped sapphires from Madagascar totalling 20.23-carats, round-cut diamonds.

CRH8001177



BLUE LINE

Watch - quartz movement. Rhodiumized white gold 750/1000 case and bracelet set with 8 blue sapphires totalling 12.49 carats and 494 brilliant-cut diamonds totalling 8.37 carats. Dial set with 126 brilliant-cut diamonds totalling 0.33 carats, 1 blue sapphire hour marker. Water-resistant to 3 bar (approx. 30 meters/100 feet).

CRHPI00606



YELLOW VIBRATION

Bracelet - white gold, yellow gold, one 19.58-carat rectangular-shaped heliodor baguette and brilliant-cut diamonds.

CRH6033116



PLAISANCE

Necklace - white gold, one 17.93-carat cushion-shaped yellow sapphire from Ceylon, square-shaped yellow sapphires, brilliant-cut diamonds.

CRH7000475



MULTI CRESCENDO

Essential Lines necklace, platinum 950/1000, set with brilliant-cut diamonds.

CRH7000963



ASTRALIS

Bracelet - white gold, one 34.66-carat rectangular-shaped corner-cut peridot, black lacquer, brilliant-cut diamonds.

CRH6014915



SÉRAPHINE

Necklace - platinum, one 4.01-carat emerald-shaped ruby from Mozambique, step-cut and brilliant-cut diamonds.

CRH7001160



SUPREME

Earrings - platinum, two oval-shaped rubies from Mozambique totalling 7.60 carats, brilliant-cut diamonds.

CRH8000056



1895 CONSOLE

Ring - platinum 950/1000, one 4.06-carat cushion-shaped ruby from Mozambique, baguette-cut diamonds.

CRH4348953



PLUIE D'ÉTÉ

Necklace - white gold (750/1000), set with 340 baguette-cut diamonds totalling 20.7 carats, 33 princess-cut diamonds totalling 4.97 carats, 2 troidia-cut diamonds totalling 0.82 carat and one square-cut diamond totalling 0.02 carat.

CRH7000260



REFLECTION

Bracelet - white gold (750/1000), set with 92 brilliant-cut diamonds totalling 3.96 carats, and with 46 baguette-cut diamonds totalling 4.96 carats.

CRH6012716



REFLECTION

Ring - 18K white gold (750/1000), set with 78 baguette-cut diamonds totalling 6.78 carats, and 13 princess-cut diamonds totalling 1.52 carats (for size 52).

CRH4386153



REFLECTION

Ring - 18K white gold (750/1000), set with 78 baguette-cut diamonds totalling 6.78 carats, and 13 princess-cut diamonds totalling 1.52 carats (for size 52).

CRH8000215



ARABESQUE

Necklace - white gold (750/1000), set with diamonds.

CRH7000769



ARABESQUE

Bracelet - white gold (750/1000), set with diamonds.

CRH6035917



ARABESQUE

Earrings - large model, white gold (750/1000), each set with 19 brilliant-cut diamonds totalling 1.64 carats, and with 10 baguette-cut diamonds totalling 2.25 carats.

CRH8000215



SINFONIA

Necklace - 18K white gold (750/1000), set with 141 square-shaped diamonds totalling 19.07 carats and 666 brilliant-cut diamonds totalling 25.34 carats.

CRH7000912



SINFONIA

Earrings - 18K white gold (750/1000), each set with 5 square-shaped diamonds and 36 brilliant-cut diamonds totalling 4.68 carats.

CRH8000932



GRAIN DE CAFÉ

Earrings - 18K yellow gold (750/1000), 18K platinum (950/1000), 10 princess cut diamonds and 94 brilliant cut diamonds totalling 2.35 carats.

CRH8001181



GRAIN DE CAFÉ

Necklace - 18K yellow gold (750/1000), platinum (950/1000), 37 princess-cut diamonds and 414 brilliant-cut diamonds for 8.74 carat

CRH7001199



GRAIN DE CAFÉ

Ring - 18K yellow gold (750/1000), platinum 950/1000, 6 princess-cut and 56 brilliant-cut diamonds for 1.73ct

CRH4414253



INDOMPTABLES

Bracelet - yellow gold 750/1000, black lacquer, set with tsavorite garnet, moonstone and onyx.

CRH6040215



INDOMPTABLES

Ring - 18K yellow gold (750/1000), black lacquer, set with tsavorite garnet and onyx.

CRH4393152



STRIA

Necklace - white gold (750/1000), rubellites, onyx, set with 554 brilliant-cut diamonds totalling 9.21 carats

CRH7000935



STRIA

Earrings - 18K white gold (750/1000), rubellites, onyx, each set with 93 brilliant-cut diamonds totalling 1.74 carat

CRH8000956



ALTESSE

Necklace - 18K rose gold (750/1000), set with 146 brilliant-cut diamonds totalling 2.07 carats, emerald and onyx.

CRH7001056



ALTESSE

Earrings - 18K rose gold (750/1000), each set with 73 brilliant-cut diamonds totalling 1.56 carats, emerald and onyx.

CRH8001060



ALTESSE

Necklace - white gold (750/1000), set with 1 emerald eye, onyx stones, 1 onyx nose, and 146 brilliant-cut diamonds totalling 2.07 carats.

CRH7000740



ALTESSE

Earrings - 18K white gold (750/1000), each set with 1 emerald eye, 4 onyx stones, 1 onyx nose and 73 brilliant-cut diamonds totalling 1.56 carats.

CRH8000780



ALTESSE

Necklace - rose gold (750/1000), set with 2 emerald eyes, 11 onyx spots, 1 onyx nose, 20 onyx stones, 39 rubellites and 549 brilliant-cut diamonds totalling 12.69 carats.

CRH7000325



ECLIPSE

Panthère de Cartier necklace, white gold (750/1000), black ceramic, set with 1 emerald eye, 24 onyx spots, 1 onyx nose, and 633 brilliant-cut diamonds totalling 6.05 carats.

CRHP700855



LOVÉE

Panthère de Cartier ring, 18K white gold (750/1000), set with a cushion-cut diamond available from 1.85 and 2.05 carats, 262 diamonds totalling 1.78 carats, emerald and onyx (for size 52).

CRH4409953



PELAGE

Panthère de Cartier necklace, white gold (750/1000), onyx, set with 3 emeralds and 257 brilliant-cut diamonds totalling 6.20 carats.

CRH7000741



PELAGE

Panthère de Cartier earrings, 18K white gold (750/1000), onyx, each set with 3 emeralds and 98 brilliant-cut diamonds totalling 2.28 carats.

CRN8026900



PELAGE

Panthère de Cartier ring, 18K white gold (750/1000), set with one sugarloaf-cut emerald totaling 1.8 carats, 17 onyx spots, and 95 brilliant-cut diamonds totaling 1.48 carats.

CRH4374953



PANTHERE BOLD

Watch - 38.2 mm, quartz movement. 18K rose gold (750/1000) panther head and case, pear-cut tsavorite eyes, buff-top onyx nose, black lacquer spots, black lacquer dial, steel sword-shaped hands, sapphire crystal, 18K rose gold (750/1000) bracelet. Thickness: 7.53 mm. Water-resistant up to 3 bar (approx. 30 meters/100 feet).

CRHPI01538



PANTHERE BOLD

Watch - 38.2 mm, quartz movement. Rhodium-finish white gold 750/1000 panther head and case set with 614 brilliant-cut diamonds totaling 4.41 carats, pear-cut emerald eyes, buff-top onyx nose, black lacquer dial, rhodium-finish steel sword-shaped hands, sapphire crystal, rhodium-finish white gold 750/1000 bracelet. Thickness: 7.53 mm. Water-resistant up to 3 bar (approx. 30 meters/100 feet).

CRHPI01741

⏪ BACK



DODONE

Ring - white gold, one oval emerald from Ethiopia totalling 10.72 carats, round emeralds and brilliant-cut diamonds.

CRH4384753

⏪ BACK



DODONE

Necklace – white gold, five oval emeralds from Ethiopia totalling 86.92 carats, round emeralds and brilliant-cut diamonds.

CRH7000841

⏪ BACK



DODONE

Ring - white gold, one oval emerald from Ethiopia totalling 10.72 carats, round emeralds and brilliant-cut diamonds.

CRH4384753

⏪ BACK



KIGUMI

Necklace - white gold, one 5.22-carat VSI pear-shaped modified brilliant-cut diamond, pear-shaped modified brilliant-cut diamonds, ruby beads, chrysoprase, onyx, rose- and brilliant-cut diamonds.

CRH7001075

⏪ BACK



KIGUMI

Earrings - white gold, pear-shaped modified brilliant-cut diamonds, ruby beads, chrysoprase, onyx, rose- and brilliant-cut diamonds.

CRH8001072

⏪ BACK



POIRE

Necklace – platinum, one 11.99-carat cushion-shaped sapphire from Madagascar, one 0.50-carat E IF pear-shaped diamond, brilliant-cut diamonds.

CRH7000949

⏪ BACK



DOUBLE PIERRE

Earrings - platinum, two cushion-shaped sapphires from Madagascar totalling 20.23-carats, round-cut diamonds.

CRH8001177

⏪ BACK



BLUE LINE

Watch - quartz movement. Rhodiumized white gold 750/1000 case and bracelet set with 8 blue sapphires totalling 12.49 carats and 494 brilliant-cut diamonds totalling 8.37 carats. Dial set with 126 brilliant-cut diamonds totalling 0.33 carats, 1 blue sapphire hour marker. Water-resistant to 3 bar (approx. 30 meters/100 feet).

CRHPI00606

⏪ BACK



YELLOW VIBRATION

Bracelet - white gold, yellow gold, one 19.58-carat rectangular-shaped heliodor baguette- and brilliant-cut diamonds.

CRH6033116

◀ BACK



PLAISANCE

Necklace - white gold, one 17.93-carat cushion-shaped yellow sapphire from Ceylon, square-shaped yellow sapphires, brilliant-cut diamonds.

CRH7000475

◀ BACK



MULTI CRESCENDO

Essential Lines necklace, platinum 950/1000, set with brilliant-cut diamonds.

CRH7000963

⏪ BACK



ASTRALIS

Bracelet - white gold, one 34.66-carat rectangular-shaped corner-cut peridot, black lacquer, brilliant-cut diamonds.

CRH6014915

⏪ BACK

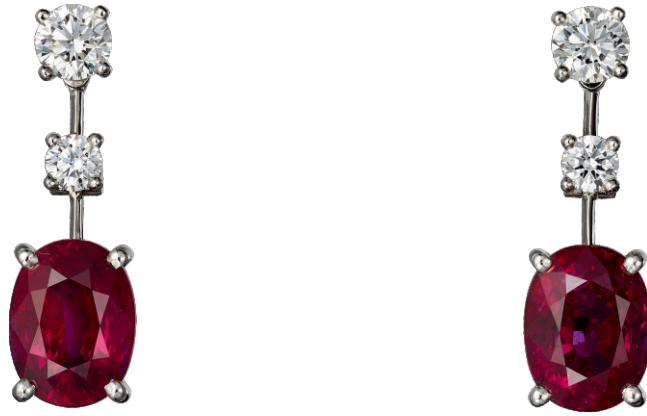


SÉRAPHINE

Necklace - platinum, one 4.01-carat emerald-shaped ruby from Mozambique, step-cut and brilliant-cut diamonds.

CRH7001160

⏪ BACK



SUPREME

Earrings - platinum, two oval-shaped rubies from Mozambique totalling 7.60 carats, brilliant-cut diamonds.

CRH8000056

⏪ BACK



1895 CONSOLE

Ring - platinum 950/1000, one 4.06-carat cushion-shaped ruby from Mozambique, baguette-cut diamonds.

CRH4348953

⏪ BACK

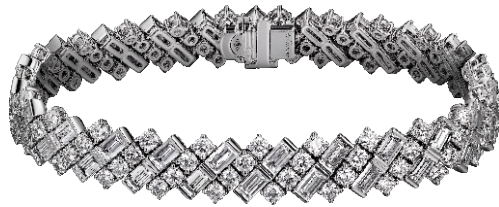


REFLECTION

Necklace - white gold (750/1000), set with 340 baguette-cut diamonds totalling 20.7 carats, 33 princess-cut diamonds totalling 4.97 carats, 2 troidia-cut diamonds totalling 0.82 carat and one square-cut diamond totalling 0.02 carat.

CRH7000260

[⏪](#) BACK



REFLECTION

Bracelet - white gold (750/1000), set with 92 brilliant-cut diamonds totalling 3.96 carats, and with 46 baguette-cut diamonds totalling 4.96 carats.

CRH6012716

⏪ BACK



REFLECTION

Ring - 18K white gold (750/1000), set with 78 baguette-cut diamonds totalling 6.78 carats, and 13 princess-cut diamonds totalling 1.52 carats (for size 52).

CRH4386153

[⏪](#) BACK



REFLECTION

Earrings - large model, white gold (750/1000), each set with 19 brilliant-cut diamonds totalling 1.64 carats, and with 10 baguette-cut diamonds totalling 2.25 carats.

CRH8000215

[◀ BACK](#)



ARABESQUE

Necklace - white gold (750/1000), set with diamonds.

CRH7000769

⏪ BACK



ARABESQUE

Bracelet - white gold (750/1000), set with diamonds.

CRH6035917

[⏪](#) BACK



ARABESQUE

Earrings - 18K white gold (750/1000), set with diamonds.

CRH8000807

⏪ BACK



SINFONIA

Necklace - 18K white gold (750/1000), set with 141 square-shaped diamonds totalling 19.07 carats and 666 brilliant-cut diamonds totalling 25.34 carats.

CRH7000912

[⏪](#) BACK



SINFONIA

Earrings - 18K white gold (750/1000), each set with 5 square-shaped diamonds and 36 brilliant-cut diamonds totalling 4.68 carats.

CRH8000932

◀ BACK



GRAIN DE CAFÉ

Necklace - 18K yellow gold (750/1000), platinum (950/1000), 37 princess-cut diamonds and 414 brilliant-cut diamonds for 8.74 carat

CRH7001199

[◀ BACK](#)



GRAIN DE CAFÉ

Earrings - 18K yellow gold (750/1000), 18K platinum (950/1000), 10 princess cut diamonds and 94 brilliant cut diamonds totalling 2.35 carats.

CRH8001181

⏪ BACK



GRAIN DE CAFÉ

Ring - 18K yellow gold (750/1000), platinum 950/1000, 6 princess-cut and 56 brilliant-cut diamonds for 1.73ct

CRH4414253

⏪ BACK



INDOMPTABLES

Bracelet - yellow gold 750/1000, black lacquer, set with tsavorite garnet, moonstone and onyx.

CRH6040215

⏪ BACK



INDOMPTABLES

Indomptables de Cartier Panthère ring, 18K yellow gold (750/1000), black lacquer, set with tsavorite garnet and onyx.

CRH4393152

⏪ BACK



STRIA

Necklace - white gold (750/1000), rubellites, onyx, set with 554 brilliant-cut diamonds totalling 9.21 carats

CRH7000935

⏪ BACK



STRIA

Earrings - 18K white gold (750/1000), rubellites, onyx, each set with 93 brilliant-cut diamonds totalling 1.74 carat

CRH8000956

[⏪](#) BACK



ALTESSE

Necklace - 18K rose gold (750/1000), set with 146 brilliant-cut diamonds totalling 2.07 carats, emerald and onyx.

CRH7001056

⏪ BACK



ALTESSE

Earrings - 18K rose gold (750/1000), each set with 73 brilliant-cut diamonds totalling 1.56 carats, emerald and onyx.

CRH8001060

[⏪](#) BACK



ALTESSE

Necklace - white gold (750/1000), set with 1 emerald eye, onyx stones, 1 onyx nose, and 146 brilliant-cut diamonds totalling 2.07 carats.

CRH7000740

⏪ BACK



ALTESSE

Earrings - 18K white gold (750/1000), each set with 1 emerald eye, 4 onyx stones, 1 onyx nose and 73 brilliant-cut diamonds totalling 1.56 carats.

CRH8000780

[⏪](#) BACK



ALTESSE

Necklace - rose gold (750/1000), set with 2 emerald eyes, 11 onyx spots, 1 onyx nose, 20 onyx stones, 39 rubellites and 549 brilliant-cut diamonds totalling 12.69 carats.

CRH7000325

⏪ BACK



ECLIPSE

Necklace - white gold (750/1000), black ceramic, set with 1 emerald eye, 24 onyx spots, 1 onyx nose, and 633 brilliant-cut diamonds totalling 6.05 carats.

CRHP700855

⏪ BACK



LOVÉE

Ring - 18K white gold (750/1000), set with a cushion-cut diamond available from 1.85 and 2.05 carats, 262 diamonds totalling 1.78 carats, emerald and onyx (for size 52).

CRH4409953

⏪ BACK



PELAGE

Necklace - white gold (750/1000), onyx, set with 3 emeralds and 257 brilliant-cut diamonds totalling 6.20 carats.

CRH7000741

[⏪](#) BACK



PELAGE

Earrings - 18K white gold (750/1000), onyx, each set with 3 emeralds and 98 brilliant-cut diamonds totalling 2.28 carats.

CRN8026900

[⏪](#) BACK



PELAGE

Ring - 18K white gold (750/1000), set with one sugarloaf-cut emerald totalling 1.8 carats, 17 onyx spots, and 95 brilliant-cut diamonds totalling 1.48 carats.

CRH4374953

⏪ BACK



PANTHERE BOLD

Watch - 38.2 mm, quartz movement. 18K rose gold (750/1000) panther head and case, pear-cut tsavorite eyes, buff-top onyx nose, black lacquer spots, black lacquer dial, steel sword-shaped hands, sapphire crystal, 18K rose gold (750/1000) bracelet. Thickness: 7.53 mm. Water-resistant up to 3 bar (approx. 30 meters/100 feet).

CRHPI01538

⏪ BACK



PANTHERE BOLD

Watch - 38.2 mm, quartz movement. Rhodium-finish white gold 750/1000 panther head and case set with 614 brilliant-cut diamonds totaling 4.41 carats, pear-cut emerald eyes, buff-top onyx nose, black lacquer dial, rhodium-finish steel sword-shaped hands, sapphire crystal, rhodium-finish white gold 750/1000 bracelet. Thickness: 7.53 mm. Water-resistant up to 3 bar (approx. 30 meters/100 feet).

CRHPI01741